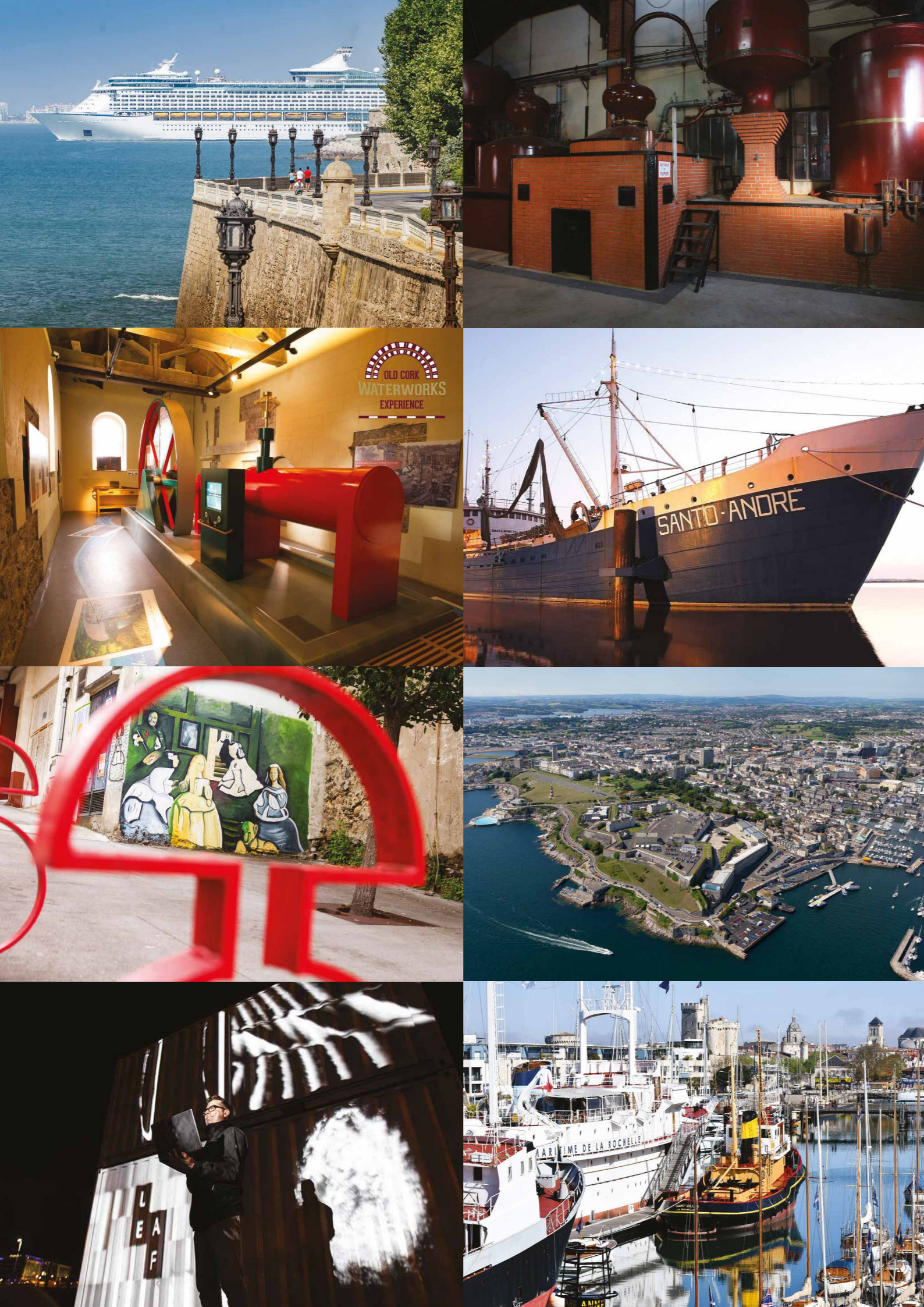




# Industrial Connections, Past & Present



The  
Atlantic Adventures  
Collection



# The Atlantic Adventures Collection

Uncover key Maritime, Military and Industrial experiences across heritage destinations on the European Atlantic Coast.

The Atlantic Adventures Collection showcases a unique range of Maritime, Military and Industrial tourism experiences linking together as key heritage destinations on the Atlantic Coast. Most of these experiences have recently undergone regeneration to recover the historical memory of these Atlantic cities and to make them more engaging for future visitors.

The Atlantic Coast destinations involved cover France, Spain, Portugal, Great Britain and Ireland:

- Plymouth      • Ílhavo      • La Rochelle
- Cork            • Cádiz        • Caen
- Limerick      • Ferrol

Liverpool

Limerick

Cork

Plymouth

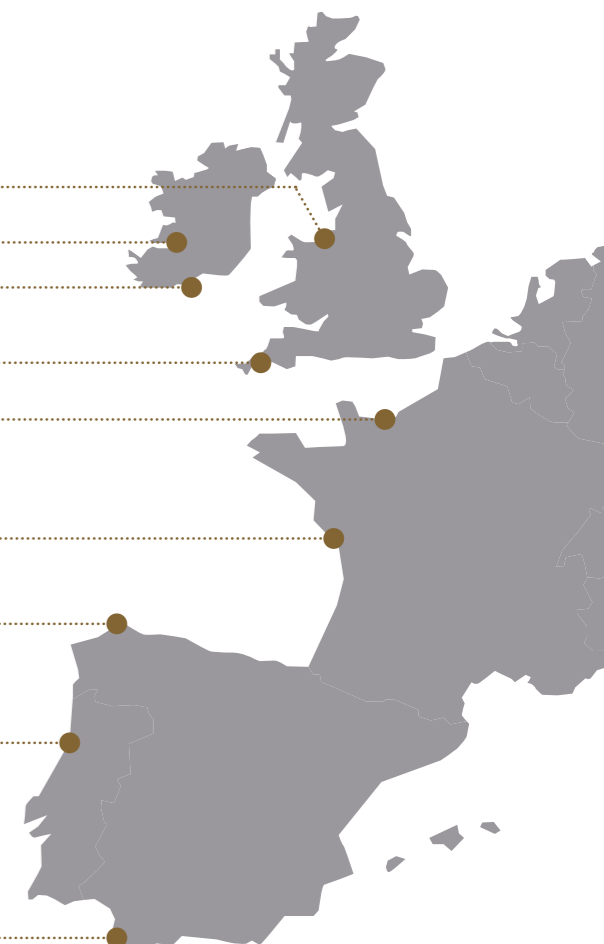
Caen

La Rochelle

Ferrol

Ílhavo

Cádiz





# Plymouth

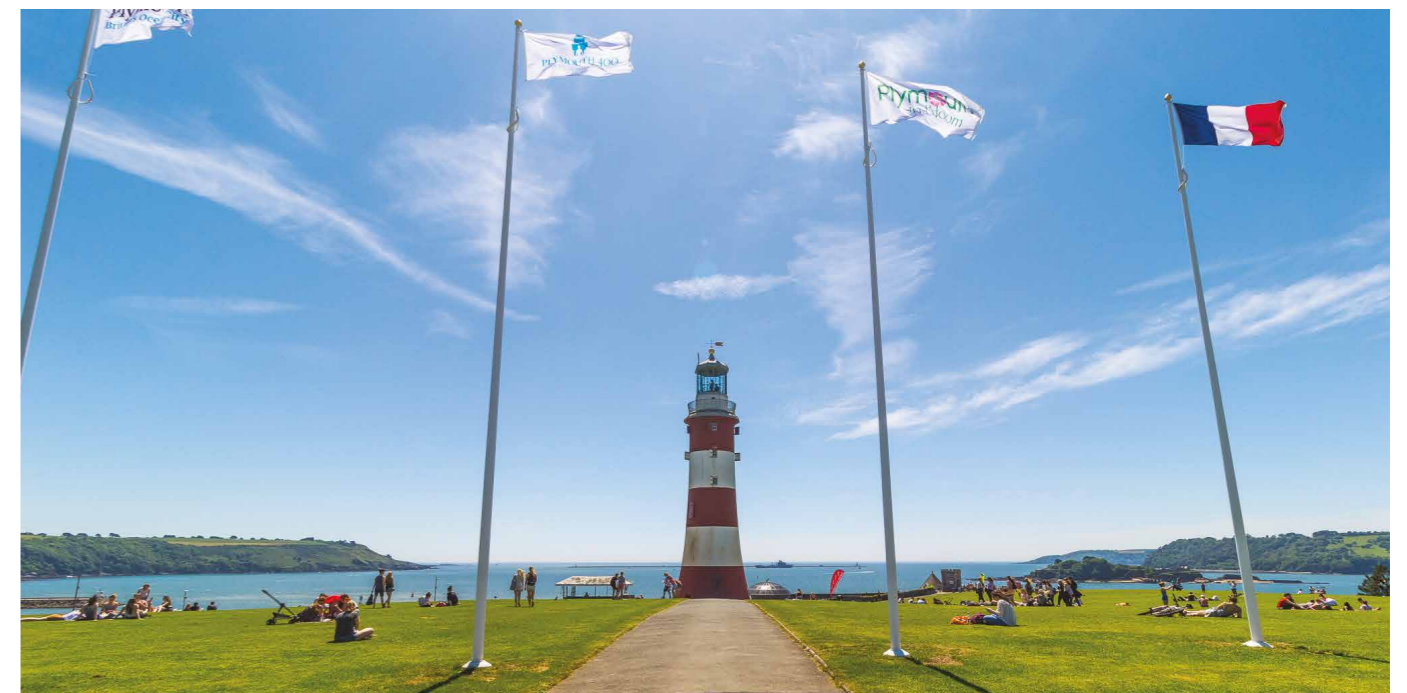
**Plymouth, Britain's Ocean City, is one of Europe's most vibrant waterfront cities, with so much to explore. There's something for every traveller to experience in this historic city, however long you have to stay.**

Visit the Barbican and Sutton Harbour for quaint cobbled streets, a picturesque harbour and wealth of independent shops and restaurants. History fans should stop by the Mayflower Steps.

Learn all about the departure of the Pilgrims on the Mayflower ship, who sailed from the UK to the US in 1620 in search of religious freedom.

A short walk from this historic heart of the city is Plymouth Hoe – to describe it as a park doesn't do it justice.

The Hoe is home to the striking red-and-white striped former lighthouse, Smeaton's Tower, the art-deco, open-air swimming pool Tinside Lido.



Smeaton's Tower

## Getting here

### Arriving by car

- Drive time from London is around 4 hours.
- Drive time from Manchester is around 4.5 hours.
- Drive time from Cardiff is around 2.5 hours.

### Arriving by train

Plymouth is easily accessible by train. Travelling from London takes around 3 hours with Great Western Railway, if you're coming from the north, the trip from Manchester can take 5 hours 15 minutes.

### Arriving by ferry

You can sail by cruise-ferry to Plymouth from France and Spain. Brittany Ferries run regular services from Roscoff in Brittany and from Santander in Northern Spain to the ferryport at Millbay – close to the city centre and waterfront.

### Arriving by air

There are 3 airports within an easy distance of Plymouth. These are Bristol, Exeter and Newquay.

## Industrial attractions to visit

### The Box

The Box is a major new cultural and heritage attraction. With a series of amazing permanent galleries filled with objects you'll be able to discover the city's human history, natural history, art, media, photographic and archive collections.

You won't be able to miss the striking naval figureheads, all lovingly restored. Once built to adorn the bows of naval warships, these icons of maritime history are suspended in a huge sweep in The Box's main entrance space. One of the first exhibitions at The Box will be 'Mayflower 400: Legend and Legacy' a major show that explores the myths and uncovers new meanings connected to the Mayflower's epic journey in 1620.

Travel trade tours include The Box Highlights, Tour, The Mayflower Experience and many other bespoke tours which can be tailor made for your group.

[www.plymhearts.org/thebox](http://www.plymhearts.org/thebox)



The Box

### Plymouth Gin

Black Friars Distillery, the working home of Plymouth Gin since 1793, is the oldest working gin distillery in England and is situated in the heart of the historic port city of Plymouth.

The building dates back to the early 1400's with the oldest part of the building – the Refectory, a medieval hall with a fine hull-shaped timber roof, dating back to 1431.

Take a guided tour and learn about the art of making the world-famous Plymouth Gin, enjoy a tutored tasting of the range and then relax in the Refectory cocktail lounge – the ultimate place to enjoy a cocktail and where the Pilgrims are said to have spent their last night before setting sail in the Mayflower to the New World.

Pre booking for groups essential

<https://www.plymouthgin.com/en-EN>

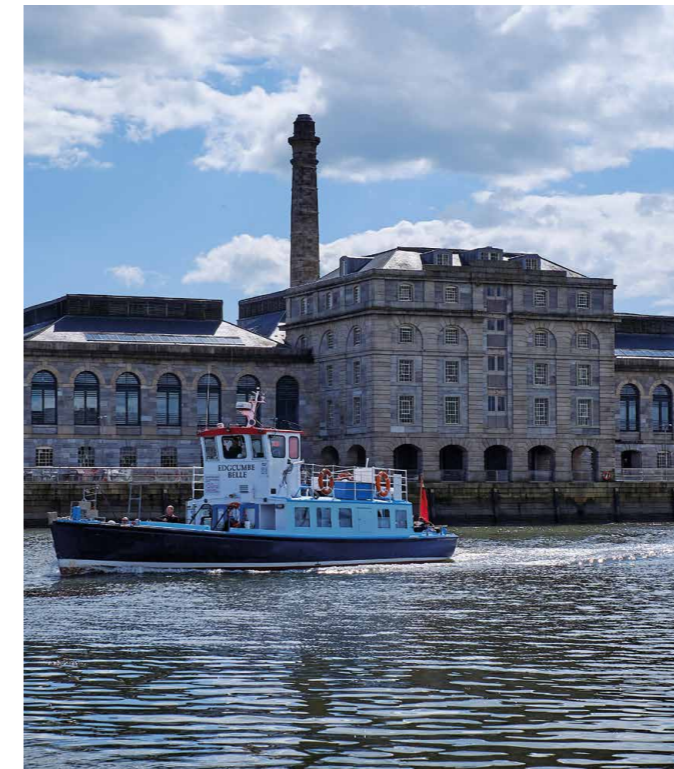


Plymouth Gin

### A visit or a Walking Tour of Royal William Yard

Royal William Yard is an award-winning Grade I listed ex-naval victualling yard. Superbly located between the River Tamar and Plymouth Sound, Royal William Yard provides breath-taking views and a great place to live or base your business.

It boasts an array of both local and more widely known eating and drinking experiences.



Royal William Yard

Take a stroll along the famous South West Coast Path and descend the stunning steps from Devils Point into the Yard. There is an on-site marina offering berthing and a regular ferry service as well as stand up paddle boarding which launches from Firestone Arches.

Royal William Yard is steeped in history. There is a different story to be told around every corner you turn and in every building you see.

Why not take one of our regular history tours to learn more about its fascinating history. Keep an eye out in the events section for when the next tours are happening.

<https://royalwilliamyard.com/relax-and-play/history-tours>

### Key events in Plymouth

#### Armed Forces Day

As a proud military city Plymouth hosts an annual Armed Forces Day event to celebrate the links with its military personnel. Find out more at [www.visitplymouth.co.uk](http://www.visitplymouth.co.uk)

### Accommodation in Plymouth

#### Crowne Plaza Hotel

[www.crowneplaza.com/crowneplaza/plymouth](http://www.crowneplaza.com/crowneplaza/plymouth)

#### Jurys Inn – 247 bedroom

[www.jurysinn.com/plymouth](http://www.jurysinn.com/plymouth)

#### Duke of Cornwall – 72 bedrooms

[www.dukeofcornwall.co.uk](http://www.dukeofcornwall.co.uk)

#### New Continental – 99 bedrooms

[www.newcontinental.co.uk](http://www.newcontinental.co.uk)

#### Moorland Garden Hotel – 42 rooms

[www.moorlandgardenhotel.co.uk](http://www.moorlandgardenhotel.co.uk)

### Food and Drink at Royal William Yard

Royal William Yard has a well deserved reputation as the place to come and eat, there's something to tempt you back time and time again. Alternatively if it's refreshment you're after they have got it covered, with everything from fine wines or healthy juices to great local beers and cocktails.

<https://royalwilliamyard.com/eat-and-drink>

For more information on places to stay, things to see and do and events in Plymouth, please visit [www.visitplymouth.co.uk](http://www.visitplymouth.co.uk)



# Liverpool

Located on the River Mersey, the Maritime City of Liverpool is only two hours by train from London and 45 minutes from Manchester airport. A city of great history, Liverpool's heritage can be seen throughout the city with the largest collection of grade II listed buildings in the country outside London, two beautiful cathedrals and the magnificent waterfront, all contributing to Liverpool being designated a UNESCO World Heritage Site in 2004.

The city has a proud industrial heritage having played its part in the Industrial Revolution as a major shipping port and as the city grew the dock area became a hive of activity and industrial innovation.

Today groups can visit the Royal Albert Dock and experience one of the finest examples of nineteenth century industrial architecture and the largest single collection of Grade I listed buildings in the UK.

Groups can delve deeper into Liverpool's industrial heritage with an expert-guided walking tour from one of our Blue Badge tour guides or visit one of the city's many interactive museums including the Merseyside Maritime Museum or Museum of Liverpool.



Bedrooms at the Titanic Hotel

## Getting here

### Arriving by train

Merseyrail trains run frequently throughout the day across 68 stations in and around the Liverpool area. With 4 city centre underground stations - Lime Street lower level, Liverpool Central, Moorfields and James Street -

you can easily get around the city, giving you more time to see everything Liverpool has to offer. For more information and live travel updates, visit [merseyrail.org](http://merseyrail.org) or download their app for up to date travel information.

### Arriving by ferry

Make the world-famous 'Ferry Cross the Mersey' with Mersey Ferries, owned and managed by Merseytravel. Cross over to Wirral Peninsula while enjoying the on-board commentary before visiting the quaint Port Sunlight

Village and Lady Lever Art Gallery. For more information on places to stay, things to see and do and events in Liverpool, please visit [www.visitliverpool.com](http://www.visitliverpool.com)

### Arriving by air

Nearest airport Liverpool John Lennon Airport nearby with regional and international flights.

## Industrial attractions to visit

### Royal Albert Dock

The Royal Albert Dock on Liverpool's waterfront was an architectural triumph that opened in 1846 and was the first structure in Britain to be built from cast iron, brick and stone. By the late 19th Century, 40% of the world's trade was passing through Liverpool's docks. Two years after the Royal Albert Dock opened it was modified to feature the world's first hydraulic cranes. It was a popular store for valuable cargoes like brandy, cotton, tea, silk, tobacco, ivory and sugar. Today visitors can take advantage of the impressive retail and leisure offering at the Dock, world class museums and attractions and some of the city's finest independents.

<https://albertdock.com/>



Royal Albert Dock

### Museum of Liverpool

The Museum of Liverpool is the world's first national museum devoted to the history of a regional city and the largest newly-built national museum in Britain for more than a century. Hop on board the overhead railway, get up close to the stage where John Lennon and Paul McCartney first met, immerse yourself in the city's rich sporting and creative history and experience for yourself what it means to be Liverpudlian. Don't miss the 360° immersive films about Liverpool and Everton FC and The Beatles!

[www.liverpoolmuseums.org.uk/](http://www.liverpoolmuseums.org.uk/)



Museum of Liverpool

### Port Sunlight

Across the river on the Wirral, charming Port Sunlight village is a historical time capsule, having been built in the nineteenth century to house workers at the local Sunlight Soap factory. With more than 2000 residents, the village features a range of attractions including the award-winning Port Sunlight Museum and a recently-restored Edwardian worker's cottage.

The village is the perfect choice for a day out with 130 acres of beautiful parkland and gardens. Also benefiting from excellent transport links, the village is just a short train ride from Liverpool and has extensive parking.

[www.portsunlightvillage.com/](http://www.portsunlightvillage.com/)



Port Sunlight

### The World of Glass

There's more industrial history at World of Glass in St Helens, where the town's glorious glass-making heritage is revealed alongside galleries and workshops plus a gift shop and café. The museum has two great galleries to explore – the Glass Roots Gallery explains the history of glass and its important role in everyday life, with artefacts dating back to Ancient Egypt, and the Earth into Light Gallery tells the story of what made St. Helens great from its humble beginnings to its rise as a world leader in glass making.

[www.worldofglass.com/](http://www.worldofglass.com/)



The World of Glass

### Mersey Ferry – Manchester Ship a Canal Cruise

Relax and enjoy a fascinating 6-hour, 35 mile journey along this famous inland waterway with the legendary Mersey Ferries. From April to October, the cruises take in spectacular scenery leaving you with an awe-inspiring sense of how the canal's construction shaped forever the city of Manchester and the North West of England.

[www.merseyferries.co.uk/](http://www.merseyferries.co.uk/)

### Food and Drink in Liverpool

#### Philharmonic Dining Rooms

Nicknamed 'the Phil', Philharmonic Dining Rooms is a Grade I listed ornate Victorian era pub. Offering an eclectic collection of real ales paired with traditionally British pub food classics, the pub is a favourite with concert goers and visitors alike.

[www.nicholsonspubs.co.uk/restaurants/northwest/thephilharmonicdiningroomsliverpool](http://www.nicholsonspubs.co.uk/restaurants/northwest/thephilharmonicdiningroomsliverpool)

#### Fazenda

Since the early 19th century Gaúchos pierced large pieces of meat and slowly grilled them over open flamed pits. At Fazenda, they wanted to keep this tradition alive.

Their gaúcho chefs roast succulent cuts of meat in the way it has been done for centuries, preserving the individual taste of each tender cut.

The Fazenda Journey starts at the salad bar, where you can find traditional Brazilian dishes, fresh vegetables, cured meats, hot dishes, condiments and several other options to accompany your meal.

When you get back to your table and are ready for your meat, you simply flip your card from red to green and that signals to Fazenda's Passadores (Meat Chefs) that you would like some of the freshly-grilled meat to be carved right on your plates.

<https://fazenda.co.uk/liverpool/>

### Accommodation in Liverpool

#### Titanic Hotel Liverpool

Titanic Hotel Liverpool, Stanley Dock is all about the restoration of one of the city's most historic and iconic buildings, once a busy warehouse now a hotel full of character and original features.

Set within a UNESCO World Heritage Site, the hotel offers 153 stylish and spacious bedrooms, theatre-style restaurant Stanley's Bar and Grill, Rum Bar overlooking the waters of Stanley Dock and the luxurious Maya Blue Wellness Centre.

[www.titanichotelliverpool.com/](http://www.titanichotelliverpool.com/)

#### Hope Street Hotel

Hope Street Hotel has 89 rooms (including seven suites and two penthouses). The style is urbane and with a fresh chic touch and a natural organic feel.

The simplicity of the design emphasises the original Victorian interior of pitch pine beams, brick walls and iron pillars, described by The Sunday Times as 'Isambard Kingdom Brunel meets Carrie Bradshaw'. Rooms have solid birch or walnut floors, bespoke cherry wood furniture and huge oversized king beds draped in white Egyptian cotton.

[www.hopestreethotel.co.uk/](http://www.hopestreethotel.co.uk/)

#### BridgeStreet Apartments

BridgeStreet Liverpool ONE is situated in the heart of the Liverpool ONE, the city's number one premier shopping and leisure destination. Centrally located, the apartments offer a choice of one, two and three bedroom apartments.

All apartments are fitted out to the highest specification throughout, with key features being great comfortable double beds, fully functional kitchens and beautiful bathrooms, serviced on a weekly basis.

[www.bridgestreet.com/home](http://www.bridgestreet.com/home)

For more information on places to stay, things to see and do and events in Liverpool, please visit [www.visitliverpool.com](http://www.visitliverpool.com)

# Cádiz

The past runs deep in Cadiz, where cobbled medieval streets spill out into whitewashed Spanish plazas and Roman ruins. As one of Europe's oldest cities, it has the feel of an urban island, marked almost entirely by beaches and ultramarine harbours dotted with fishing boats.

Cadiz is an important shipping port with regular ferry services to the Canary Islands ports of Arrecife in

Lanzarote, Las Palmas de Gran Canaria, Santa Cruz de Tenerife and La Palma.

The city is also an important port of call for cruise ships which are taking part in a Mediterranean Cruise.

Historically Christopher Columbus sailed from the port of Cadiz on his voyages of discovery while during Elizabethan times Sir Frances Drake raided the city and of course the famous battle of Trafalgar took place a few kilometres south of the city and port.



Cadiz Tall Ships

## Getting here

### 🚆 Arriving by train

Cádiz is easily accessible by train with direct connections to Madrid and other key tourism locations.

### ✈️ Arriving by air

The Province of Cádiz currently has an airport located 7 kilometres from Jerez de la Frontera and 50 kilometres from the city of Cádiz. There is also a transport link to Africa thanks to the Algeciras heliport.

### 🚢 Arriving by cruise

Seville and Malaga airports are within easy reach and offer flights to a wide range of international and national destinations.

Port of Cádiz & Cruise Terminal. (Up to 400.000 cruise passengers arriving on board of more than 400 cruise ships to Cádiz every year).

## Industrial attractions to visit

### Lithographic Museum

The Lithographic Museum is located in the Puerta de Tierra Bastion, and has its origin in the old German Lithography of Cádiz, which was installed in 1861 and was in operation for artistic printing until the end of the 20th century. It is one of the few museums of this kind existing in Spain and it is considered the most complete of them, as it should be remembered that Cádiz was the third Spanish city, after Madrid and Barcelona, to have a lithographic workshop.

The museum has a very important collection made up of over a thousand lithographic stones, from the Bavarian quarries and of great quality; some of them being true works of art as far as engravings and old drawings are concerned. These stones are duly preserved and exposed to the public. Among the most striking pieces of the Museum are a stone of great dimensions and more than 300 kilos and a manual press made in Paris in 1850, which is one of the few in the world.

[www.turismo.cadiz.es](http://www.turismo.cadiz.es)

### Cadiz Conference Centre (Old Royal Tobacco Factory)

The Cádiz Conference Centre is built over the structures of the Royal Tobacco Factory of Cádiz, first created in 1741 by Felipe V on the site of the old corn market in the city; and on this, the current construction of 1883, structured in three floors, with an irregular plan forming an exempt block.

The result is a striking exposed brick construction, glazed pottery on roofs and some detail halfway between the English factories and the traditionalist evocation, which makes it integrate perfectly with the eighteenth-century character of the city.

Located in the heart of the old town, next to the main train station, the port of Cádiz and the commercial area, the Cádiz Conference Centre has become one of the most emblematic buildings in the city. The building has an area of almost 7,500 square metres, divided into three floors and its various units allow it to host all kinds of events, congresses, conferences and exhibitions.

[www.turismo.cadiz.es](http://www.turismo.cadiz.es)

### Old Tobacco Warehouse

The Old Tobacco Warehouse is an industrial installation whose main building was built in 1912. It is an architectural complex of important historical, architectural and landscape values, made up of powerful buildings made of stonework and brick, distributed over an extensive area, linked to a network of tracks along which the wagons used for transporting tobacco circulated, all of which is integrated into a garden that harmonises the sobriety of the building typology for industrial use.

In Spain, there were only two large raw tobacco warehouses, one in the South and the other in the North, in Cadiz and Santander. These warehouses received the shipments of tobacco acquired in the great world markets and kept them in storage as a reserve and regulation for the supply to the factories according to the manufacturing needs.

In the old industrial installation, currently without activity, a Rehabilitation Project is being developed, included in the Sustainable Urban Development Strategy EDUSI CADIZ2020, whose objective is to create a SOCIAL INNOVATION SPACE at the service of the citizens, welcoming new uses such as cultural, business and leisure, all of which promote care for the environment and sustainable development.

[www.turismo.cadiz.es](http://www.turismo.cadiz.es)

### Key events in Cádiz

Annual Music concerts and Festivals in the Port of Cadiz in summer time.

Please visit [www.turismo.cadiz.es](http://www.turismo.cadiz.es)

### Food and drink in Cádiz

A visit to the market is a must to breathe in the atmosphere of Cádiz and see all the wonderful fresh fish, fruit and vegetables.

Please visit [www.turismo.cadiz.es](http://www.turismo.cadiz.es)

### Accommodation in Cádiz

Please visit [www.turismo.cadiz.es](http://www.turismo.cadiz.es)

For more information on places to stay, things to see and do and events in Cádiz, please visit [www.turismo.cadiz.es](http://www.turismo.cadiz.es)

# Caen

**Caen, in Normandy, is one of the oldest university towns in France. Bustling with activity, it is a vibrant and attractive city on the River Orne.**

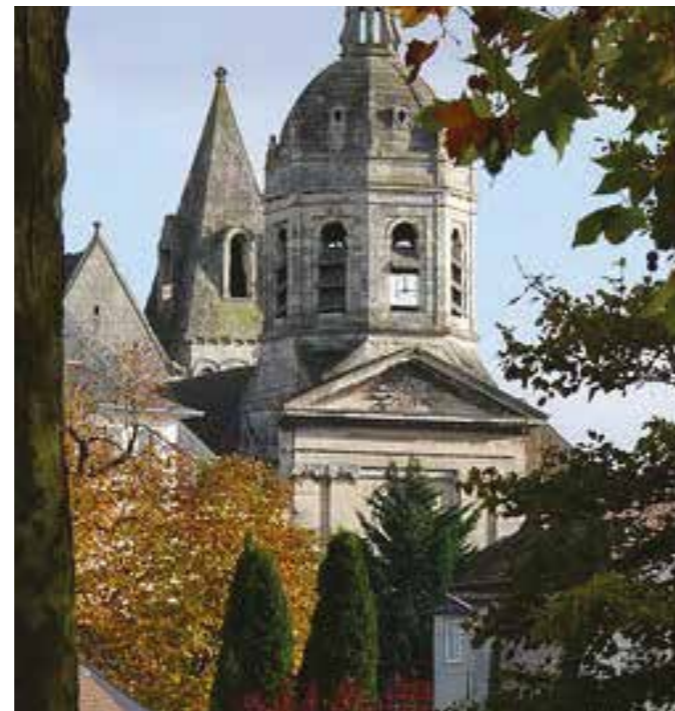
Brimming with exquisite art and fashion boutiques alongside superb markets selling fine wines and fresh produce, Caen provides an indulgent shopping experience.

The rich tastes of Normandy can be experienced not only in the dairy and seafood dishes served in

Caen's excellent restaurants but also at the street side crêperies and pâtisseries.

Much of Normandy is predominantly agricultural in character, with cattle breeding the most important sector. Normandy is a significant cider-producing region, and also produces calvados, a distilled cider or apple brandy.

Other activities of economic importance are dairy produce, horse breeding (including two French national stud farms), fishing, seafood, and tourism.



## Getting here

### Arriving by car

Main motorway routes direct to Caen. Drive time to Paris approx. 3 hours.

### Arriving by train

Caen is easily accessible by train with direct connections to Paris and Cherbourg and other key tourism locations.

### Arriving by air

Caen-Carpiquet has its own airport with international flights, located just 6km outside of Caen. Other airports nearby in Normandy:

- Deauville
- Cherbourg-Maupertus
- Dieppe-Saint-Aubin
- Le Havre-Octeville
- Rouen-Vallée de Seine.

### Arriving by ferry

Direct routes on a daily basis to the UK.

# Industrial attractions to visit

## The Metallurgical Company of Normandy (SMN)

The Great Hall and the large offices are the last testimonies of the "Société Métallurgique de Normandie". The industrial site has become the "Effiscience" research and development park for new technologies and the Normandial site dedicated to the food industry.

<https://www.le-wip.com/>



The WIP – The Great Hall – Colombelles. (Photo credits the WIP)

## The Iron House

The Red Mound where the iron industry began... The restoration of the three calcination kilns was carried out as part of a masonry training course and with a stonemason-dresser from Banvou, near Dompierre.

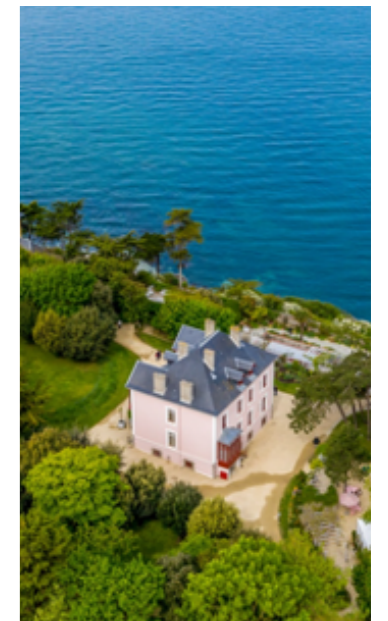
<https://lesavoiretlefer.fr/>



The Iron House. (Photo credit Caen Normandie Metropole)

## Granville and the DIOR family saga

Granville was one of Newfoundland's most important cod fishing harbours in the 19th century, associated with an industrial boom that supported economic development and left its mark on the urban fabric until the mid-20th century. After 1815, only commercial and industrial activity remained. From the end of the 19th century, there was a slow decline in port activity, followed by a drop in trade after the First World War.



The cod activity gradually gave way to imports and exports by long haul or coastal shipping. On the eve of the First World War, there was no longer an armaments company. On the other hand, the port facilities were large enough to allow the unloading and embarkation of goods of various origins destined for the Norman hinterland. It is in this context that the Dior family developed several industrial and commercial activities, the most important of which is the phosphate trade.

This boom in commercial activities linked to industrialization shaped the urban landscape of the port of Granville, traces of which are still present. Today the railway from the station to the port is one of the most interesting examples

<https://www.tourisme-granville-terre-mer.com/>  
<http://www.musee-dior-granville.com/>

## La Madeleine Jeannette - Colombelles

Sweet cakes  
<https://www.jeannette1850.com/accueil>

## Domaine l'Olivier - cider factory in Dompierre (61)

Cider and perry  
<https://www.ledomaineolivier.com/>



## Cork: a city shaped by its industrial past

The mid-eighteenth to early nineteenth century was a period of rapid expansion in Cork city, fuelled by a booming local economy based on industries such as brewing, dairy, textiles and shipping.

The city's population grew rapidly and the moniker, 'city of the merchant princes' was often applied in reference to Cork.

Many canals and river channels that divided up the island city-centre were diverted or covered, and large

stone warehouses began to spring up along the quays and docklands, ready to supply the constant flow of ships leaving Cork Harbour for destinations as far away as the West Indies.

Cork butter was considered to be of the finest quality and the butter market in the Shandon district grew to become the world's largest.

During this time of prosperity, many fine buildings and facilities were added to the city's fabric and during the 1860s, Cork's first waterworks was constructed, drastically improving the quality of life for the citizens and providing a further boost to local industry.



Engine display at the Old Cork Waterworks Courtyard

## Getting here

### Arriving by car

Cork is linked to Dublin via the M8 motorway and Rosslare Harbour via the N25 and both journeys take about 2.5 hours.

### Arriving by train

Cork's Kent Station offers easy access to the national rail network with hourly trains to Dublin (journey time 2.5 hours) and is just a 10-minute walk from the City Centre. From Kent Station you can also access local towns such as Cobh, Mallow, and Charleville.

### Arriving by air

The airport is located just 10 minutes from Cork City Centre. Bus and taxi services are available just outside the arrivals area. Cork Airport offers direct flights from almost 50 destinations around Europe including major hub airports in London, Amsterdam and Paris.

### Arriving by sea

Located just 15km from Cork City centre, the ferry terminal offers easy access to and from mainland Europe. Brittany Ferries operate daily services between Cork-Roscoff (France) and Cork-Santander in (Spain). Cork is also accessible via ferry from Rosslare and Dublin.

## Industrial attractions to visit

### The Butter Museum

The Butter Museum is a unique institution, celebrating one of the great success stories of Ireland – the butter trade.

Located in the historic Shandon area of Cork city, the story begins with the central role of dairy culture in the Island of Saints and Scholars. The Museum goes on to describe the internationally important Butter Exchange in nineteenth century Cork.

By this period the Cork butter market had become the world's largest and was a pivotal to Cork's success in maritime trade. In the course of this story, the commercial, social, and domestic life of Ireland is recalled. Please contact the museum for group bookings. Butter making demonstrations are available from April 2020.

[www.thebuttermuseum.com](http://www.thebuttermuseum.com)



The Butter Museum

### Old Cork Waterworks Experience

#### Welcome to Ireland's only Victorian Waterworks

Old Cork Waterworks was masterfully designed by Victorian architect and engineer Sir John Benson, whose signature design of alternating red sandstone and grey limestone can be found throughout Cork City.

Built to meet the demands of a fast growing city driven by the Industrial Revolution and rural-urban migration in the years following The Great Famine, these waterworks had a powerful impact on the daily lives of its citizens. This attraction is a hidden gem with lots to do for young and old and a visit makes a great family day out. Full facilities are available with refreshments, a picnic area and a playground for the kids.

Self-Guided & Audio Guide available. Guided tour available on request and groups are very welcome. Visitor Handout, Audio Visual and Audio Guide available in English, French, Italian, German and Spanish - included in admission.

[www.oldcorkwaterworks.ie](http://www.oldcorkwaterworks.ie)



Old Cork Waterworks Experience

### Key events in Cork

Please visit [www.purecork.ie](http://www.purecork.ie) for an up to date listings on events in Cork.

### Accommodation in Cork

Cork has a wide range of accommodation options – so whether you're looking for 5 star pampering or bustling hostels, you'll find something to suit your needs and budgets.

To find out more visit [www.purecork.ie](http://www.purecork.ie)

### Food and drink in Cork

Food and Drink in Cork Renowned as the "Food Capital" of Ireland, Cork's food culture and its fresh local produce are reflected in a vibrant local food scene with an extensive variety of dining options. Cork offers a wide range of pubs, many of which feature live music, with new microbreweries also flourishing.

To find out more visit [www.purecork.ie](http://www.purecork.ie)

For more information on places to stay, things to see and do and events in Cork, please visit [www.purecork.ie](http://www.purecork.ie)

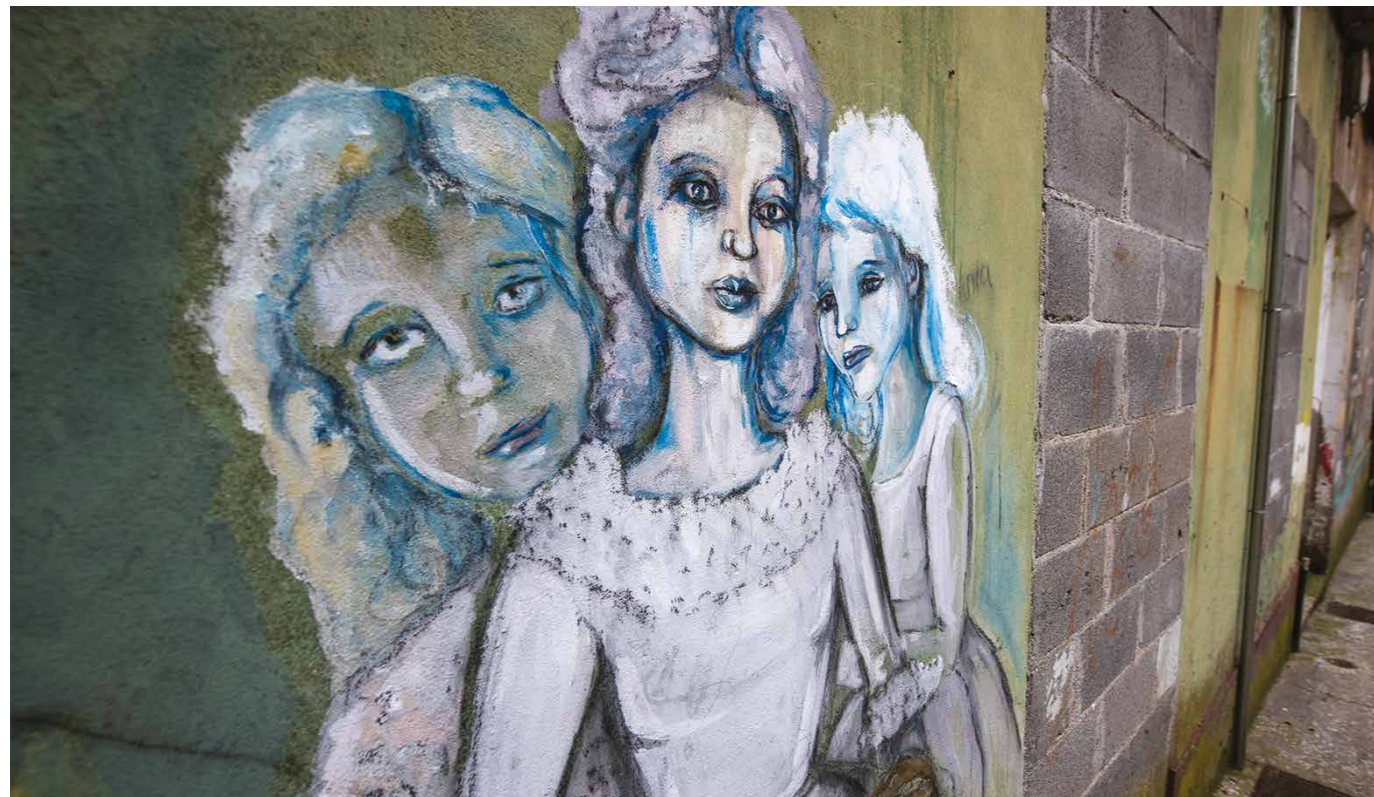
# Ferrol

It is a city of great concern and cultural dynamism, as shown by the fact that it is the birthplace of great writers and thinkers (Gonzalo Torrente Ballester, Ricardo Carvalho Calero or Concepción Arenal), painters (Álvarez de Sotomayor, Felipe Bello Piñeiro or Segura Torrella) and musicians.

In fact, part of the city's tangible and intangible heritage is bound up with this huge culture, such as the festival of Las Pepitas (held on the night of San José), or Las

Meninas, an urban art event promoted by local artist Eduardo Hermida, who has been gathering painters and artists of various nationalities for over a decade to decorate the walls of the Canido neighbourhood with interpretations of Velázquez's painting Las Meninas

One experience visitors should not miss is a visit to the Castle of San Felipe, which transports us back to the past with a vision of the importance of the military presence in the construction and development of the city. It is a fortress built outside the city on the coast, at the mouth of the estuary. It offers beautiful and strategic views of the city, and a sweeping panorama of the whole estuary.



Las Meninas, an urban art

## Getting here

### Arriving by car

Drive time from Madrid is around 6 hours with accessible motorways connecting to major cities in Spain.

### Arriving by train

Ferrol is easily accessible by train with direct connections to Madrid and other key tourism locations including Barcelona.

### Arriving by air

There are 3 airports within an easy distance to Ferrol. These are La Coruna, Santiago de Compostela and Vigo.

## Industrial attractions to visit

### Guided walking tours of Ferrol

There are guided tours, within the so-called Shipbuilding Route, to the Military Arsenal, Capitanía General (first Saturday of each month), Dolores Barracks, San Felipe Castle (sometimes they are dramatised) and Navantia.

These tours are carried out by a private company, Ferrol Guías (ferrolguias.com), prior reservation, or during holiday periods.

[www.ferrolguias.com](http://www.ferrolguias.com)



Navantia

### San Felipe Castle

It is the most important military construction in Ferrol. Located opposite La Palma Castle (in Mugardos) and the former castle of San Martiño, the three fortifications made the Estuary of Ferrol impregnable – a sort of “triangle of fire” that no enemy power dared to attack. At night, the castles of San Felipe and La Palma were linked by a chain in order to prevent the passage of enemy ships.

San Felipe is in constant process of restoration. It surprises visitors both for its constructive scheme and for the beautiful views of the estuary that can be seen from its location.

<https://visitferrol.com/castillo-de-san-felipe/?lang=en>



Arsenal y lancha

### Key events in Ferrol

**Festival of Las Pepitas**

**Las Meninas**

For more key events in Ferrol please visit [www.visitferrol.com](http://www.visitferrol.com)

### Food and drink in Ferrol

Please visit <https://visitferrol.com/donde-comer/?lang=en>

For more information on places to stay, things to see and do and events in Ferrol, please visit [www.visitferrol.com](http://www.visitferrol.com)

### Accommodation in Ferrol

Please visit <https://visitferrol.com/donde-dormir/?lang=en>

# Ílhavo

## Ílhavo is deeply connected with the fishing of codfish.

These connections of Ílhavo with the sea can be seen in the Museum Marítimo de Ílhavo, which for besides the building, they have the only surviving Cod Fishing Vessel, the ship makes an integral part of the Museum collections. The ship makes integral part of the Museum and provides lodging for temporary exhibitions. Also, next to the Museum it is possible to see a codfish aquarium. The recently renovated Maritime Museum of Ílhavo is dedicated to the White Fleet fisheries and to the Ria de Aveiro fishermen.

The city of Ílhavo is also famous for the industry of porcelain Vista Alegre, the porcelain company, was founded in the city, where it has its factory.

Almost 200 years ago an entrepreneur and visionary Jose Ferreira Pinto Basto opened what is today known as one of the most prestigious porcelain brands in the world, Vista Alegre Factory in Ílhavo, Portugal.

It all started in 1815, right next to the lagoon of Aveiro. The location was carefully chosen as the soil of the region is rich in the essential manufacturing elements of porcelain and glass, such as fuels, clay, white and thin sands and crystallised pebbles.



Ilhavo Farol Da Barra

## Getting here

### Arriving by car

Direct route from Lisbon (approx. 2 hours 30 mins) or Porto (approx. 1 hour).

### Arriving by train

Ílhavo is easily accessible by train (station in Aveiro) with direct connections to Lisbon (approx. 2 hours) or Porto (approx. 40 mins).

### Arriving by air

Nearest airport is Porto (Francisco Sá Carneiro Airport).

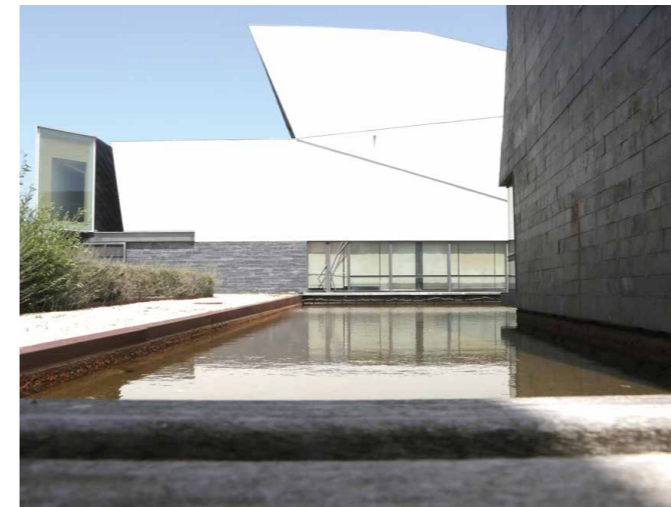
## Industrial attractions to visit

### Museu Marítimo de Ílhavo

In an award-winning building from 2001, Ílhavo's Maritime Museum has three main galleries: You can learn about the peculiar origins of the Aveiro Lagoon, and see the typical painted wooden boats adapted for these waters.

Then there's a room all about the White Fleet and Portugal's Atlantic and North Sea cod fisheries, which were the main employer in the 20th century. And lastly there are recollections of everyday life Ílhavo over time and the town's deep connection with the sea.

<https://museumaritimo.cm-ilhavo.pt>



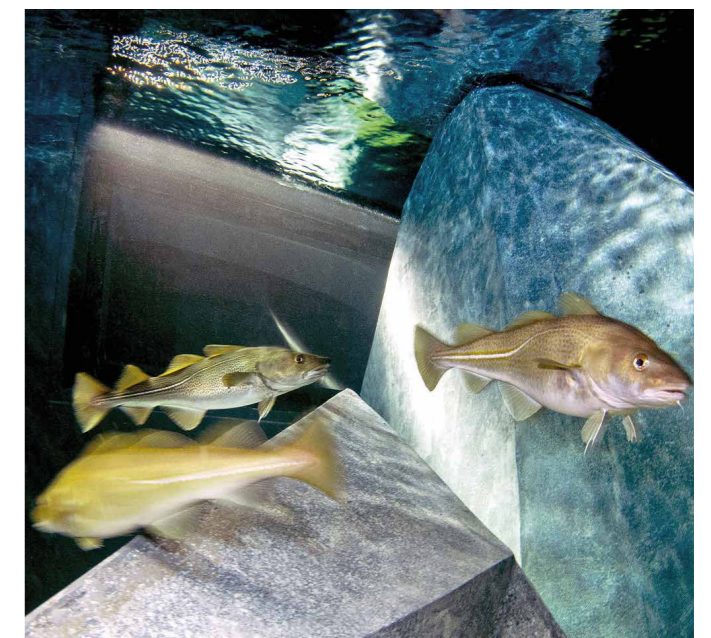
Museu Marítimo de Ílhavo

### Visita Alegre

The Vista Alegre Museum intends to show the factory's history, the aesthetic evolution of porcelain production and its significance in Portuguese society of the 19th and 20th centuries, through one of the most complete museum collections of that kind.

Take a journey into the world of porcelain.

<https://vistaalegre.com/eu/>



Cod Aquarium (Museu Marítimo de Ílhavo)

### Key events in Ílhavo

**Codfish Festival**  
August

**Our Lady of the Sailors Nautical Procession**  
February

For key events in Ílhavo please visit [www.visitilhavo.pt](http://www.visitilhavo.pt)

### Accommodation in Ílhavo

Please visit [www.visitilhavo.pt/p/alojamento](http://www.visitilhavo.pt/p/alojamento)

### Food and drink in Ílhavo

Please visit [www.visitilhavo.pt/p/restaurantes](http://www.visitilhavo.pt/p/restaurantes)

For more information on places to stay, things to see and do and events in Ílhavo, please visit [www.visitilhavo.pt](http://www.visitilhavo.pt)

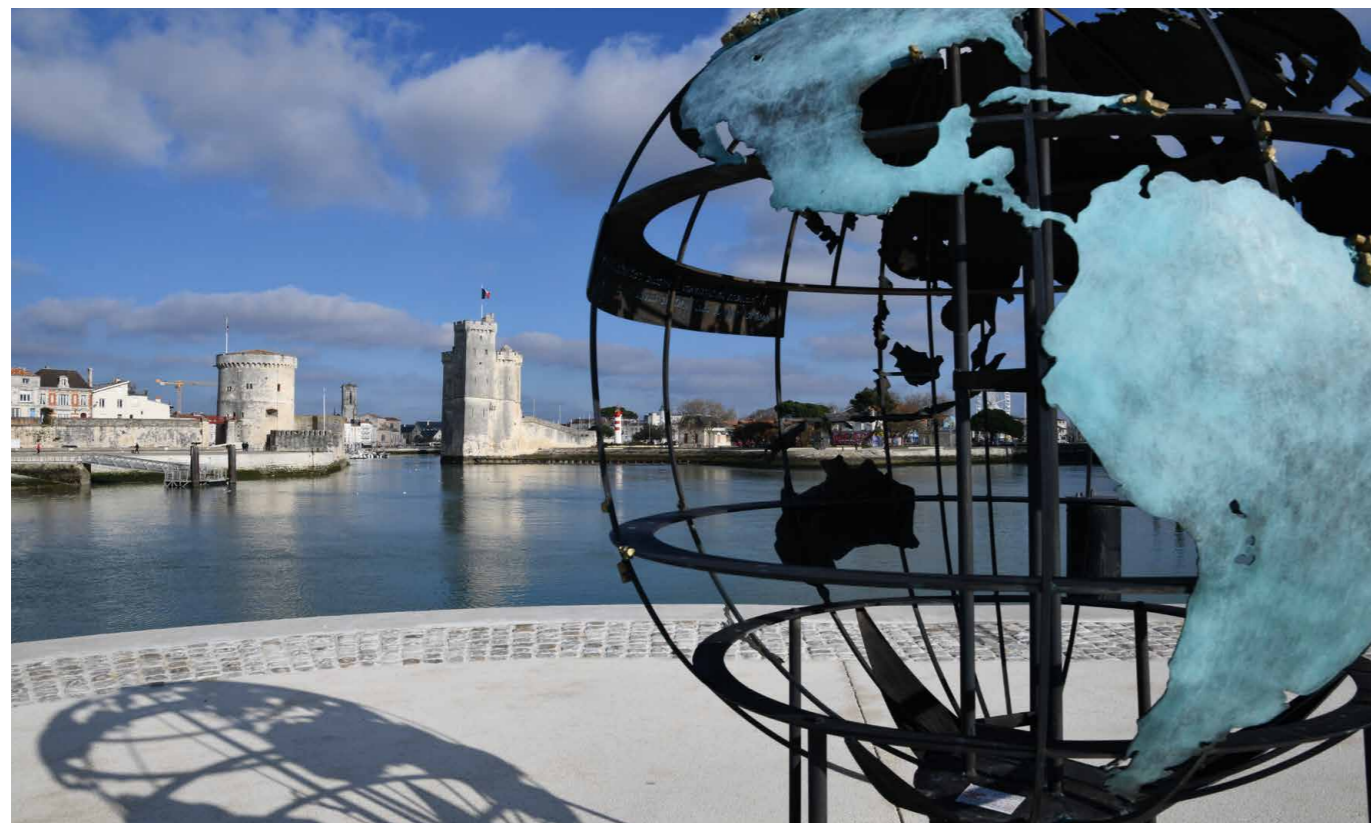
# La Rochelle

La Rochelle is known today as a maritime and port city, with several elements referring to its maritime and industrial past.

Built at the end of the 19th century, the port of La Pallice led to a new maritime industry and the development of a working-class district.

Despite shipyards meltdown at the end of the 1980s, modernisation of the port and transformations of the district, the industrial memory of the place has not disappeared and buildings bear the marks of this.

The trawler basin, for its part, has been marked by industrial fishing and a ship repair industry around the slipway. Today, the Maritime Museum tells this story. Ship repair and industrial fishing gave way to a new nautical industry and cultural tourism, but the district has retained its port, maritime and industrial soul.



The two towers of La Rochelle, emblem of the city

## Getting here

### Arriving by car

Accessible motorway routes:

- Paris: 467 km
- Lyon: 650 km
- Marseille: 825 km

### Arriving by train

La Rochelle is easily accessible by train with direct connections to Paris and other key tourism locations – La Rochelle to Paris – 3hrs.

### Arriving by air

La Rochelle has its own airport located very close to the town with flights to and from key locations in France, Spain, Great Britain and other close European destinations.

**French version**  
<https://www.larochelle-tourisme.com>

**English version**  
<https://www.holidays-la-rochelle.co.uk>

## Industrial attractions to visit

### D-6 Dredger Virtual Reality Experience at the Maritime Museum

TD6 is a bucket steam dredger, built in 1906, today the oldest still preserved in France. The ship has been made into a 3D modelling and a virtual reality experience is in the Maritime Museum permanent exhibition. Come and discover this “Julesvernian” heritage, an emblematic testimony of the fight against silting in the history of La Rochelle.

<https://museemaritime.larochelle.fr/>



Maritime Museum

### Visit of the trade port

Built in 1890, the port of La Pallice is the only deep-water port on the Atlantic coast, and the 6th biggest port in France. All year round, bus tours are organised to help visitors discover the port facilities. The Port House, representing the connection between the city and the port area, host a model presenting the port and its activities, as well as temporary exhibitions. A fresco has also been designed associating artists and residents of the district to embellish the former blockhouse.

<https://www.larochelle-tourisme.com>



La Sirene

### Key events in La Rochelle

#### Open Port Day

Though closed to the public since 2010, the trade Port still arouses the curiosity of all. To create a strong link between the port and the district, the “Open Port Day” offers every year in June, an opportunity for curious people from here and elsewhere to meet professionals to discover their trades and activities. On this occasion, you can visit the trade Port by sea (by boat) or on land (by bus), as well as most of the servitude ships. Enter the heart of the port universe and experience a moment of sharing and exchange during this day not to be missed.

Due to COVID-19, the 2020 edition is cancelled and postponed to next year.

<https://www.larochelle-tourisme.com>

For more information on events in La Rochelle please visit <https://www.holidays-la-rochelle.co.uk>

### Accommodation in La Rochelle

**Please visit**  
**French version**  
<https://www.larochelle-tourisme.com>  
**English version**  
<https://www.holidays-la-rochelle.co.uk>

### Food and Drink in La Rochelle

**Please visit**  
**French version**  
<https://www.larochelle-tourisme.com>  
**English version**  
<https://www.holidays-la-rochelle.co.uk>

For more information on places to stay, things to see and do and events in La Rochelle, please visit

**French version**  
<https://www.larochelle-tourisme.com>  
**English version**  
<https://www.holidays-la-rochelle.co.uk>

# Limerick

Industry and agriculture were key factors to the development and growth of Limerick in the 18th and 19th centuries. Ideally located at the head of the Shannon Estuary, Limerick became an important centre for the import and export of agricultural produce.

The two major industries in Limerick at this time were the production of flour and cured bacon, known as Limerick Ham, from which the city gained the moniker of 'Pigtown'.

Though many of the traditional industries no longer exist, the rich architectural and cultural heritage of these industries can still be seen in the streetscape of this modern and vibrant city in the numerous surviving mills, markets and granaries that dot the city.



The Milk Market

## Getting here

### Arriving by car

Drive time from Dublin to Limerick (M7) is 2 hours 20 min.  
 Drive time from Cork to Limerick (N20) is 1 hour 30 min.  
 Drive time from Galway to Limerick (M18) is 1 hour 20 min.

### Arriving by train

Limerick is easily accessible by train, with direct connections to Dublin, Cork and Galway.

### Arriving by air

Shannon International Airport is located 20km from Limerick City (30 min drive).

## Industrial attractions to visit

### The People's Museum of Limerick

Located in Pery Square, in the heart of Limerick's Georgian Quarter, The People's Museum of Limerick contains a fascinating collection of local artefacts that showcase the rich social heritage of Georgian and Victorian Limerick. The museum is situated in a grand Georgian terraced building which has been sensitively restored by the Limerick Civic Trust. It also hosts a wide range of visiting exhibitions, lecture series and workshops relating to Limerick's past.

<https://www.peoplesmuseum.ie/>



The People's Museum of Limerick

### Treaty City Brewery

Located in the heart of Limerick's Medieval Quarter, Treaty City Brewery will appeal to craft beer enthusiasts and the culturally curious with a unique experience detailing Limerick's long brewing history. This artisan micro-brewery is located in Nicholas Street, Limerick's medieval thoroughfare, the newly restored buildings have a long and storied history, including being the site of a small brewery in the early 18th century.

<https://treatycitybrewery.ie/brewery-tours-limerick/>



Treaty City Brewery

### Key events in Limerick

#### Richard Harris International Film Festival

Limerick's most famous and favourite actor Richard Harris is commemorated in this annual film festival held over the October Bank Holiday Weekend. The Richard Harris International Film Festival hosts retrospective screenings of Richard Harris films, as well as screenings of a wide variety of local and international premieres and documentaries, live script readings and interactive acting masterclasses.

<https://richardharrisfilmfestival.com>

#### Limerick Electronics Arts Festival: LEAF

The inaugural Limerick Electronics Arts Festival will welcome internationally renowned music artists, leaders in social media innovation, e-sports stars and innovators in tech for a world-first event showcasing electronic arts, the intersection of technology and artistic expression throughout Limerick in a range of re-imagined city centre venues. The main venue of the festival will be the expansive site of the historic Cleeve's Factory located on the northern bank of the River Shannon, in the city centre.

<https://www.leaf061.com/>

### Accommodation in Limerick

#### The Limerick Strand Hotel – award winning 4 star hotel

<https://www.strandhotellimerick.ie/>

#### The Bedford Townhouse – is a boutique heritage town

<https://www.thebedford.ie/>

### Food and drink in Limerick

#### The Milk Market

Located in Limerick's historic Market Quarter, The Milk Market has operated since 1852. It has developed into the largest covered farmers market in Ireland. Offering a wide range of local produce and artisanal fares.

<http://www.milkmarketlimerick.ie/>

#### The East Room, Plassey House – Irish Cuisine

<https://eastroom.ie/>

For more information on places to stay, things to see and do and events in Limerick, please visit [www.limerick.ie](http://www.limerick.ie)





The Atlantic Adventures Collection in partnership with



The Atlantic Adventures Collection